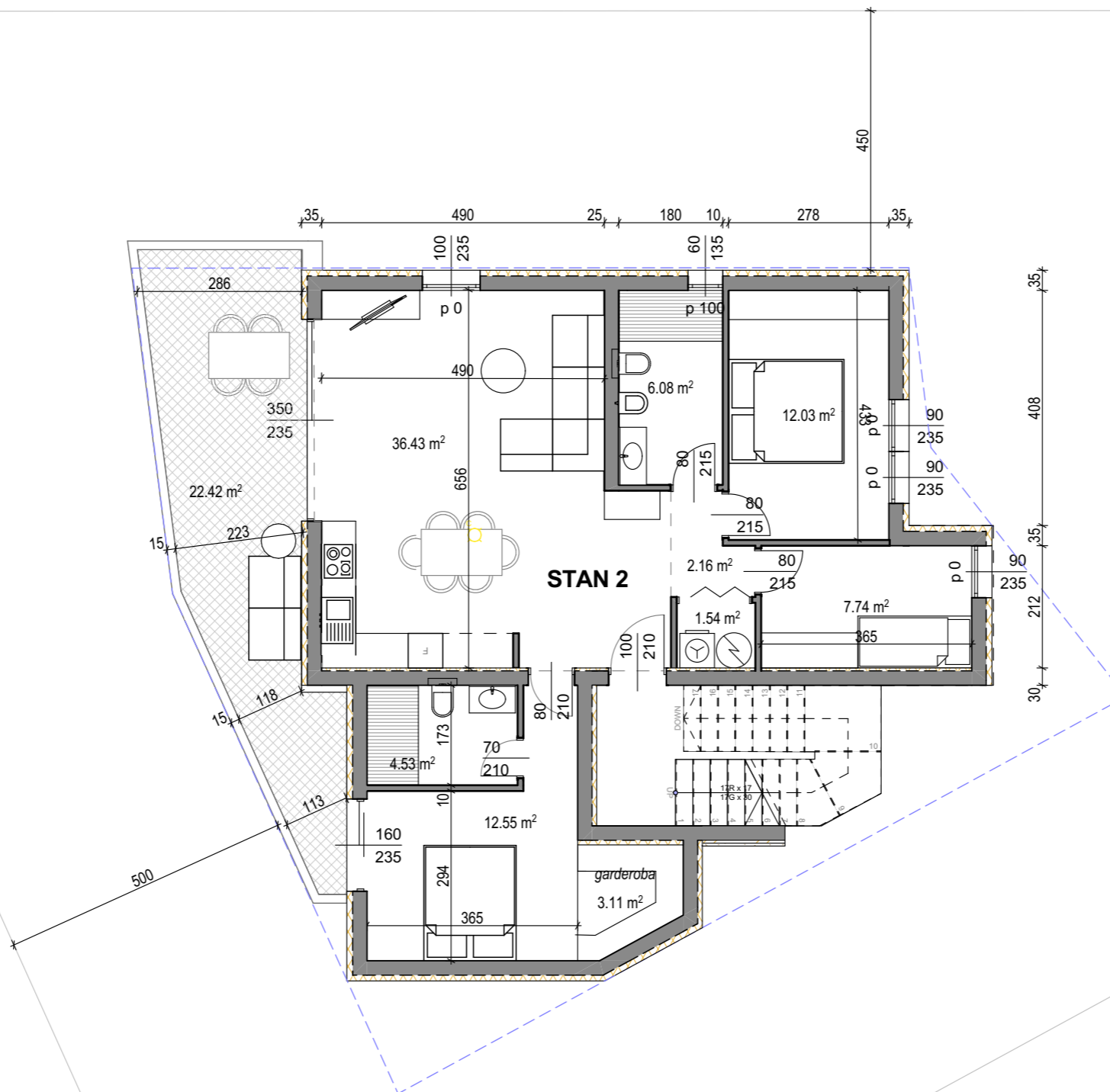
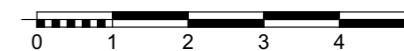


PRVI KAT Mj 1:100



STAN 2	
- dnevni boravak i kuhinja =	36,43 m ²
- predprostor 1 =	2,16 m ²
- izba =	1,54 m ²
- soba 1 =	12,55 m ²
- garderoba =	3,11 m ²
- kupaona 1 =	4,53 m ²
- soba 2 =	12,03 m ²
- soba 3 =	7,74 m ²
- kupaona 2 =	6,08 m ²
ukupno =	86,17 m ²
nat.terasa=	22,42 x 0,75 = 16,82 m ²
SVEUKUPNO STAN=	102,99 m²